

ClimbingBASE

TECHNICAL
DATASHEET

APRIL 2026 | VERS. 01

ClimbingBASE PRODUCT FEATURES

Meets the highest standards for functionality and fire protection

Corrosion-resistant thanks to high-quality stainless steel components

Simple push-through installation

Vertical support bars made from circular hollow sections

Load transfer via brackets or point foundations

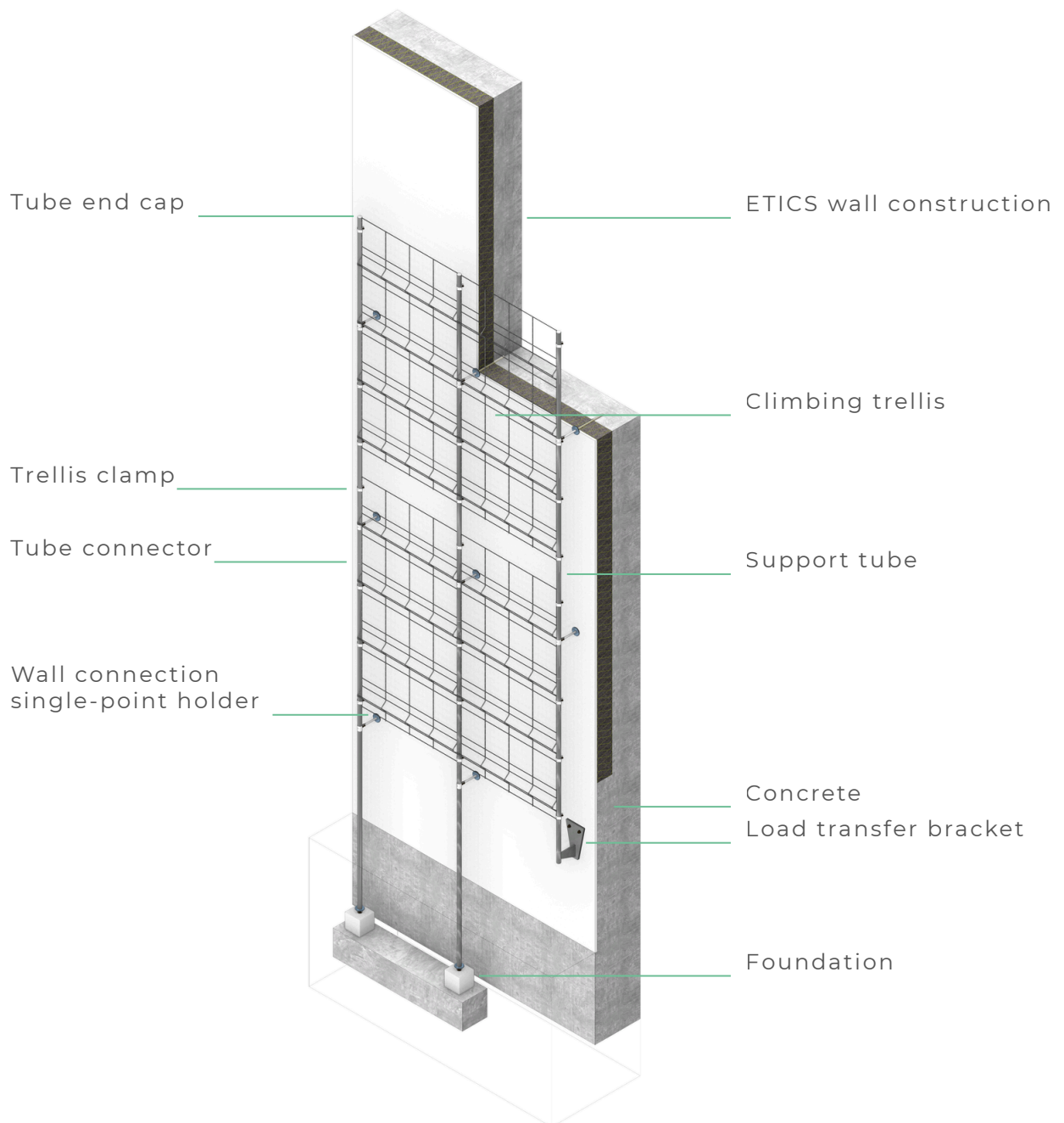


PRODUKT SPECIFICATIONS

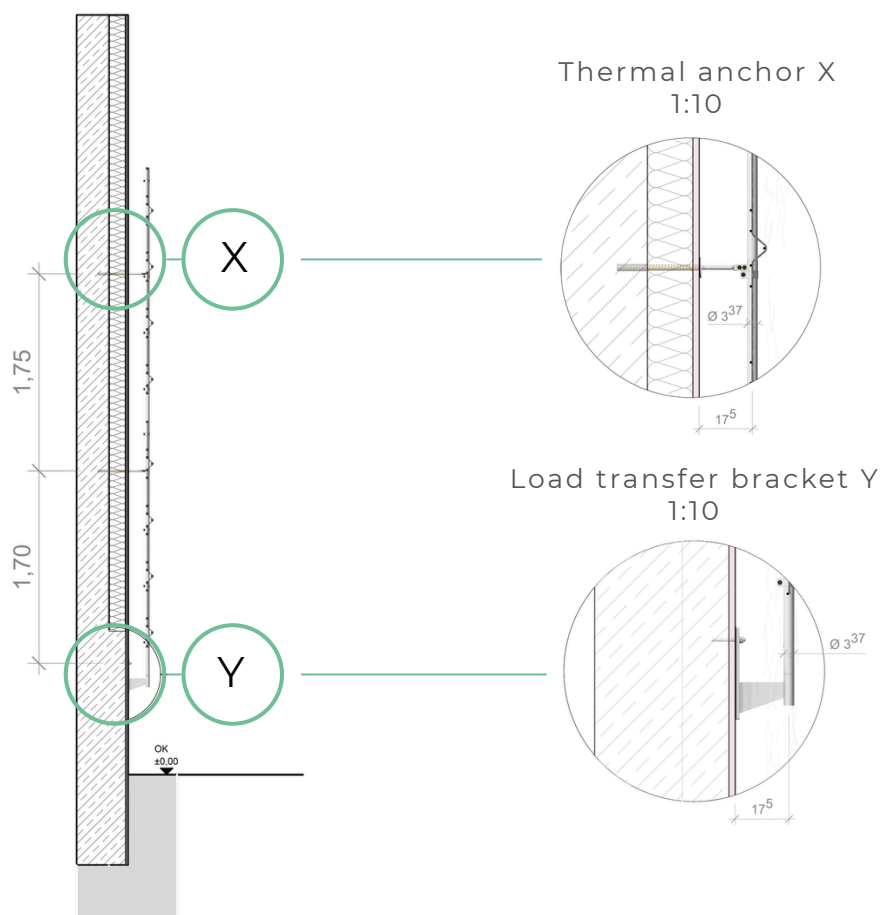
Parameter	Specification
Trellis format:	965 x 2000 mm
System weight:	ca. 5 - 9 kg/m ² *
Materials and finishes:	Stainless steel (1.4301), pickled and passivated
Planting heights:	3,00 - 15,00 m
Centre-to-sentre spacing:	1000 mm
Fire protection:	A1 - non-combustible
Structural system:	available

* Configuration-dependent average across the planted area, excl. plants.

ClimbingBASE COMPONENTS



ClimbingBASE SECTION A-A LOAD TRANSFER VIA BRACKETS

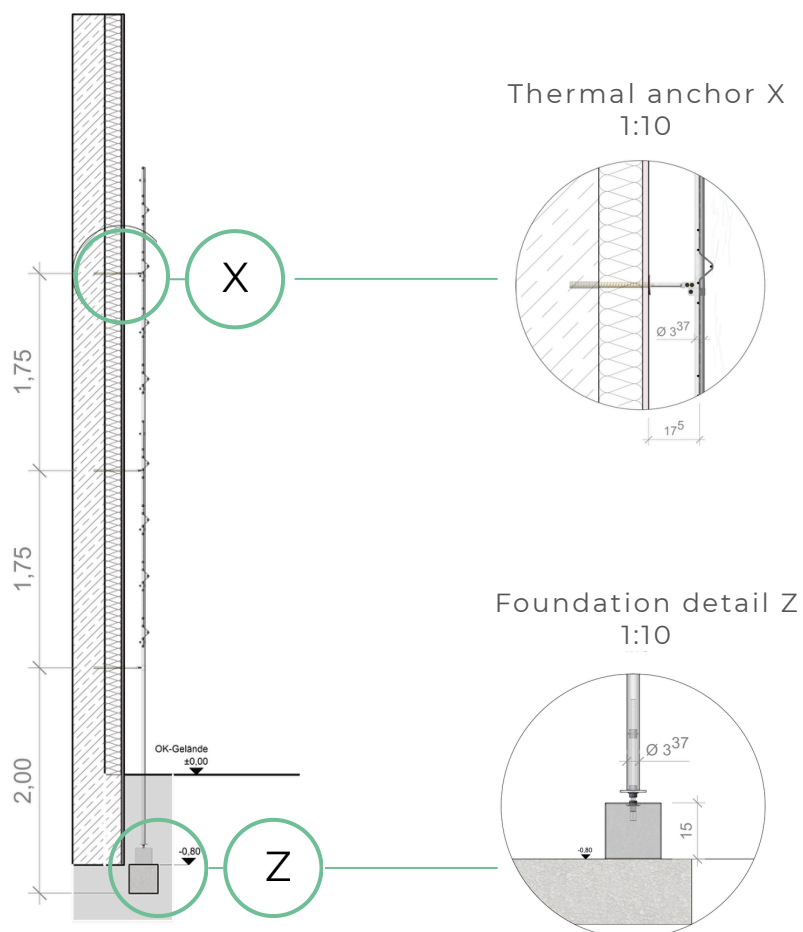


BRIEF DESCRIPTION

The mean anchor spacings are $L_v = 1.75$ m. Load transfer is achieved via brackets anchored to load-bearing walls or the building plinth.

The connection to the base of the anchorage is made using thermally decoupled façade anchors. This allows flexible use in both new-build and existing buildings.

ClimbingBASE SECTION B-B LOAD TRANSFER VIA POINT FOUNDATIONS

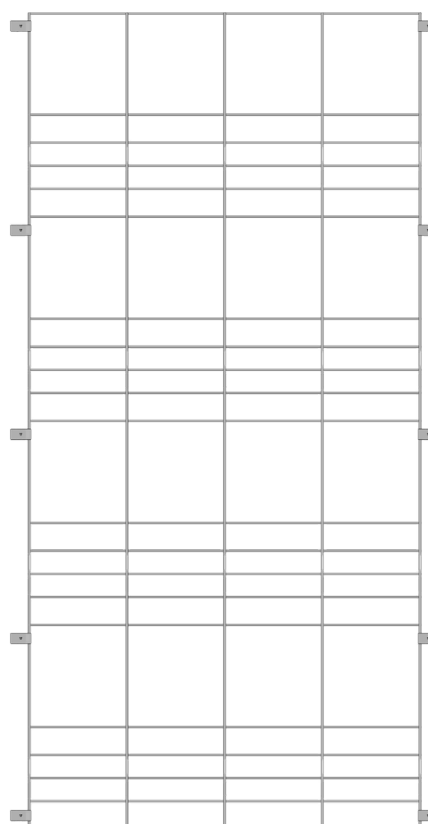
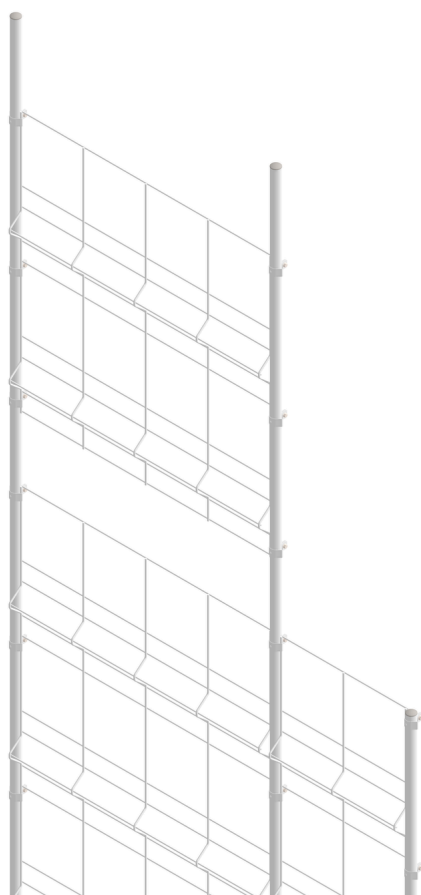


BRIEF DESCRIPTION

The mean anchor spacings are $L_v = 1.75$ m. Load transfer is achieved via a point foundation, thereby relieving the wall anchors.

The connection to the base of the anchorage is made using thermally decoupled façade anchors. This enables flexible use in both new-build and existing buildings.

STAINLESS STEEL TRELLIS



BRIEF DESCRIPTION

folded trellis edge for increased load capacity and improved plant support.

Trellis format: 965 x 2000 mm

Material: Stainless steel 1.4301

DO YOU HAVE ANY QUESTIONS ABOUT THE SYSTEM?

Our technical support team
is happy to help.

CONTACT

Vertiko GmbH
Buchenhofener Straße 25
42329 Wuppertal

+49 202 947 939-00
anfrage@vertiko.de
vertiko.de

